



NovoTHOR Whole Body Light Pod is revolutionizing the recovery industry with the most effective application of whole body Photobiomodulation Therapy (PBM Therapy).

Supported by over 550 published randomized control trials, PBM Therapy is a powerful modality that has been utilized for over 20 years by thousands of clinics, hospitals, and elite sports institutions in 70 nations via hand-held devices on localized areas of the body.

PBM Therapy is previously known as Low Level Light Therapy, and is the application of red and near-infrared light to tissue where there is degeneration or injury, to improve, repair, and reduce inflammation and pain. This is achieved via PBM Therapy's ability to reduce oxidative stress – accepted as the underlying trigger for most diseases and degenerative conditions. Oxidative stress is also a component in the inflammatory phase of acute and chronic injuries.

Today, NovoTHOR is first Whole Body Light Therapy Pod on the market exclusively designed to deliver effective, penetrating wavelengths at the proven power densities and dosages that cover the entire body more evenly than any other device -- in just 12 minutes! Unlike drugs and surgery, PBM Therapy actually promotes regeneration, reduces inflammation and pain, is non-toxic, and is non-invasive. PBM Therapy is safe, relaxing, and has no known negative side effects.

NovoTHOR sessions of 12-20 minutes, 2-5 x per week can be used to achieve the following:

- Restoration of motion to joints
- Redevelop muscles
- Temporary relief of minor muscle and joint aches, pain and stiffness
- Relaxation of muscles and relief from muscle spasms
- Temporary relief of minor muscle and joint aches, pain and stiffness
- Temporary relief of minor pain and stiffness associated with arthritis
- To temporarily increase blood circulation
- Adjunct to obesity as part of a diet and exercise program



This information has not been evaluated by the Food & Drug Administration. This product is not intended to diagnose, treat, cure or prevent any disease. Consult your physician before beginning any exercise program.

TECHNICAL DATA

Treatment Duration: 8-12 minutes

Wavelengths:

Red and Near Infrared LED system; switchable from Mixed (Red + Near Infrared) to Red only

Number of Diodes:

Red: 630nm x 1200

Red: 660nm x 1200

NIR: 850nm x 1200

Irradiance: 17mW/cm² (average density for the entire surface area)

Digital Timer: Programmable count down timer with auto shut off

Overall Dimensions:

Standard: 77.5"L X 35W" X 52"H (197cm X 91.5cm X 132cm)

XL: 110"L X 50"W X 60"H (277cm X 126cm X 152cm)

Treatment Bed Length:

Standard: 73.5"L

XL: 87"L

Weight:

Standard: 360 lbs. (163.29 kg)

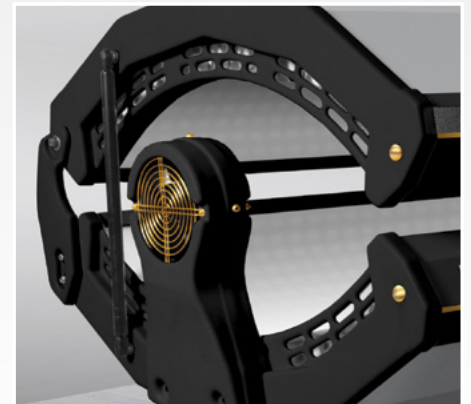
XL: 450 lbs. (204 kg)

Voltage: 220 - 240VAC 11A max 50/60Hz

Max Consumption: 2400W

Service Interval: Annual, by trained personnel

Projected LED Life: Greater than 30 years under typical use



WARRANTY

5 YEAR CONDITIONAL WARRANTY: THOR warrants that its light/LED systems will function and perform within specification for two years from the date of delivery. This is automatically extended for another three years if serviced by THOR under a separate maintenance agreement every year continuously up to a maximum of five years. This warranty covers all parts, labor and shipping during the warranty period with some exclusions. WARRANTY EXCLUSIONS: The warranty shall not apply to equipment that has been abused, modified or damaged, or fitted with substitute parts other than parts supplied by THOR. THOR shall not be liable for any consequential loss or inconvenience caused by any failure of its products.

PRICING

Please call Sales at 214.363.3111 for all pricing information.